

BV12 Oval Handle 2-Piece Threaded Ball Valve 1000 PSI

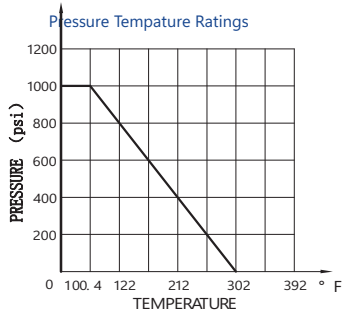
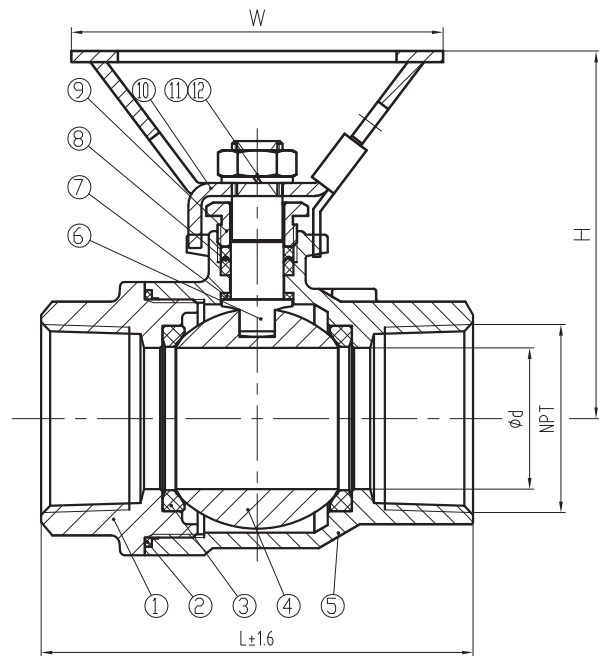


GENERAL CHARACTERISTICS

- Investment Casting Stainless Steel
- Full Port Body
- NPT Threaded End Connection (ANSI B1.20)
- Oval Handle
- Blow-Out-Proof Stem Design
- Available in PTFE & R-PTFE Seat Material
- Design Fully Complies with ASME B16.34
- Tested in Accordance to API 598

Materials List

12	NUT	1	A194 8
11	SPRING WASHER	1	304
10	HANDLE	1	STAINLESS STEEL
9	GLAND	1	304
8	PACKING	1	PTFE
7	STEM WASHER	1	PTFE
6	STEM	1	A276 316
5	BODY	1	A351 CF8M
4	BALL	1	SS316
3	SEAT	2	PTFE
2	GASKET	1	PTFE
1	BONNET	1	A351 CF8M



Dimensions

NPS	L	d	NPT	W	H	Weight (lb)
1/2"	2.480	0.591	1/2"	3.740	2.559	0.61
3/4"	2.874	0.768	3/4"	4.134	2.677	1.15
1"	3.307	0.984	1"	4.724	3.071	1.68
1 1/4"	3.858	1.260	1 1/4"	5.197	3.504	2.56
1 1/2"	4.154	1.496	1 1/2"	5.906	4.134	3.48
2"	4.744	1.929	2"	5.906	4.409	8.2