

## BV63 Extended Weld Ball Valve, 1000 PSI

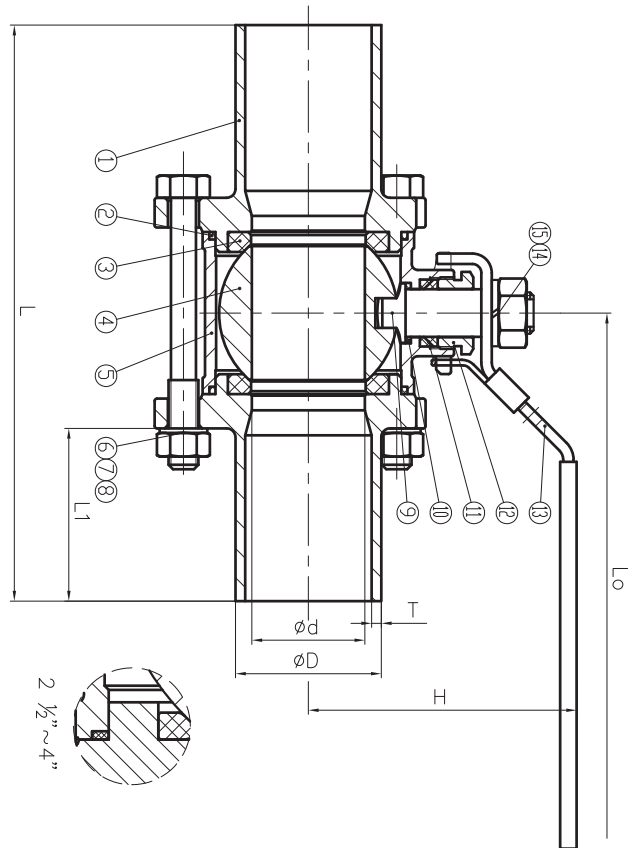


### GENERAL CHARACTERISTICS

- Investment Cast Stainless Steel
- Full Port Body
- Extended Weld End Connection
- Blow-Out-Proof Stem Design
- Working Pressure of 1000 Psi
- Design fully complies with ASME B16.34
- Tested in accordance to API 598

### Materials List

NO.	DESCRIPTION	Q'TY	MATERIAL
15	NUT	1	A194 8
14	SPRING WASHER	1	304
13	HANDLE	1	STAINLESS STEEL
12	GLAND	1	304
11	PACKING	1	RPTFE
10	STEM WASHER	1	RPTFE
9	STEM	1	A276 316
8	NUT	-	A194 8
7	SPRING WASHER	-	304
6	HEXAGON HEAD BOLT	-	A193 B8
5	BODY	1	A351 CF8M
4	BALL	1	SS316
3	SEAT	2	RPTFE
2	GASKET	2	RPTFE
1	BONNET	2	A351 CF8M



### Dimensions

NPS	L	L1	d	D	T	Lo	H	Weight(lb)
1/2"	5.933	2.165	0.591	0.854	0.083	4.134	2.126	1.411
3/4"	6.130	2.224	0.768	1.071	0.083	4.724	2.579	1.786
1"	7.331	2.677	0.984	1.339	0.110	5.512	2.835	2.535
1 1/4"	7.701	2.598	1.260	1.681	0.110	5.906	3.189	4.575
1 1/2"	9.118	3.150	1.496	1.913	0.110	6.693	3.780	5.401
2"	9.583	3.031	1.929	2.382	0.110	7.283	4.134	7.716
2 1/2"	11.425	3.720	2.520	3.004	0.118	8.661	4.724	-
3"	11.898	3.602	3.031	3.508	0.118	10.623	5.295	-
4"	12.843	3.563	3.898	4.500	0.118	12.402	6.181	-

