

ANIX®

Class 125/ Class 250
PN16/PN25/JIS 10K/JIS 16K

Lug Butterfly Valve



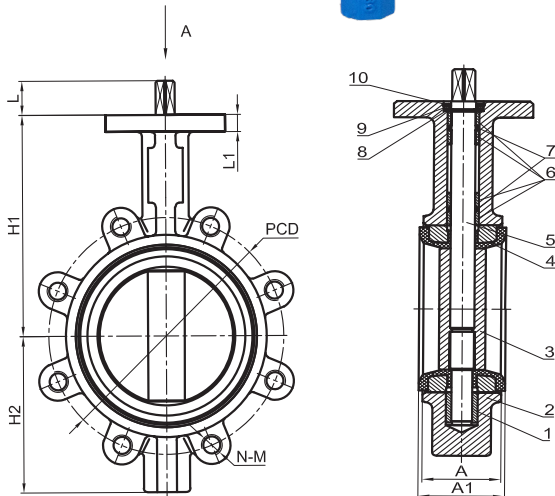
Valve Standard :
Comply with ISO 5752/BS 5155/
BS EN 593/MSS SP-67/API 609
Lever / Worm Gear Operator, Epoxy Coated

Pressure Temperature Ratings

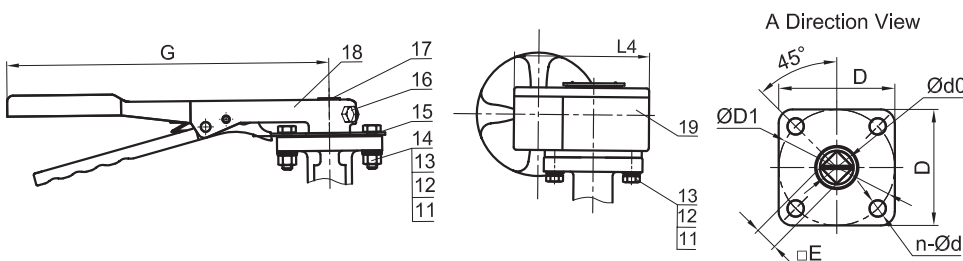
Working pressure	16bar/25bar
Testing Pressure	Shell:24bar/37.5bar Seat:17.6bar/27.5bar
Working Temperature	-20°C to 110°C EPDM Seat -10°C to 80°C NBR Seat
Suitable Media	Water,Oil&Gas

Material Specification

Part	Material	ASTM
Body	Cast Iron	A126 Class B
	Ductile Iron	A536 65-45-12
Disc	Ductile Iron	A536 65-45-12
	Bronze	B148 C95400
	Stainless Steel 304	A351 CF-8
	Stainless steel 316	A351 CF-8M
Shaft	Stainless steel 316	A276 S 316 00
	Stainless Steel 410	A276 S 410 00
Seat Ring	Stainless Steel 431	A276 S 431 00
	EPDM / NBR	
Taper Pins	Stainless Steel 304	A276 S 304 00
	Stainless Steel 316	A276 S 316 00
Key	Stainless Steel 410	A276 S 410 00
	Carbon Steel	
O-Ring	EPDM / NBR	
Bushing	PTFE	
	Bronze	B62 C83600



DN	Inch	H1	H2	A	A1	D	ØD1	Ød0±0.03	n-Ød	L1	□E	L	ANSI Class150	
													PCD	N-Ø
50	2	5.56	2.70	1.65	1.81	1.97	1.97	0.47	4-Ø0.28	0.39	0.35	0.87	4.75	4-Ø0.75
65	2.5	5.92	2.99	1.75	1.93	1.97	1.97	0.47	4-Ø0.28	0.39	0.35	0.87	5.50	4-Ø0.75
80	3	6.16	3.74	1.75	1.93	1.97	1.97	0.47	4-Ø0.28	0.39	0.35	0.87	6.00	4-Ø0.75
100	4	6.61	4.33	2.01	2.18	2.76	2.76	0.55	4-Ø0.39	0.43	0.43	0.98	7.50	4-Ø0.75
125	5	7.34	5.09	2.15	2.31	2.76	2.76	0.69	4-Ø0.39	0.43	0.55	0.98	8.50	8-Ø0.87
150	6	8.10	5.59	2.15	2.33	2.76	2.76	0.69	4-Ø0.39	0.43	0.55	0.98	9.50	8-Ø0.87
200	8	9.08	6.93	2.35	2.52	2.76	2.76	0.87	4-Ø0.39	0.55	0.67	0.98	11.75	8-Ø0.87
250	10	10.63	8.35	2.64	2.83	4.02	4.02	1.10	4-Ø0.47	0.63	0.87	1.06	14.25	12-Ø0.98
300	12	12.91	9.78	2.97	3.13	4.02	4.02	1.10	4-Ø0.47	0.63	0.87	1.06	17.00	12-Ø0.98



19	Gear Box	Cast Iron
18	Lever	Malleable Iron
17	Plastic Cover	ABS
16	Screw	SS316/SS201
15	Notch Plate	SS430
14	Nut	SS316/SS201
13	Plain Washer	SS316/SS201
12	Lock Washer	SS316/SS201
11	Hex Bolt	SS316/SS201
10	Circlip	65Mn
9	Washer	Carbon Steel
8	Circlip	65Mn
7	O-Ring	NBR/EPDM
6	Bushing	Bronze/PTFE
5	Shaft	SS410
4	Seat	NBR/EPDM
3	Disc	DI/CF8/CF8M
2	Body	DI
1	Bushing	Bronze/PTFE
Item	Name	Material