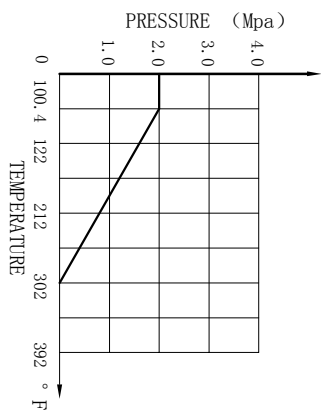
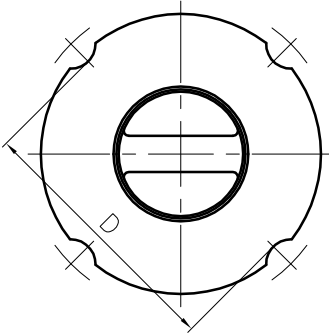
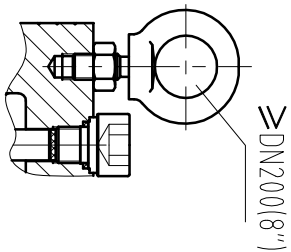
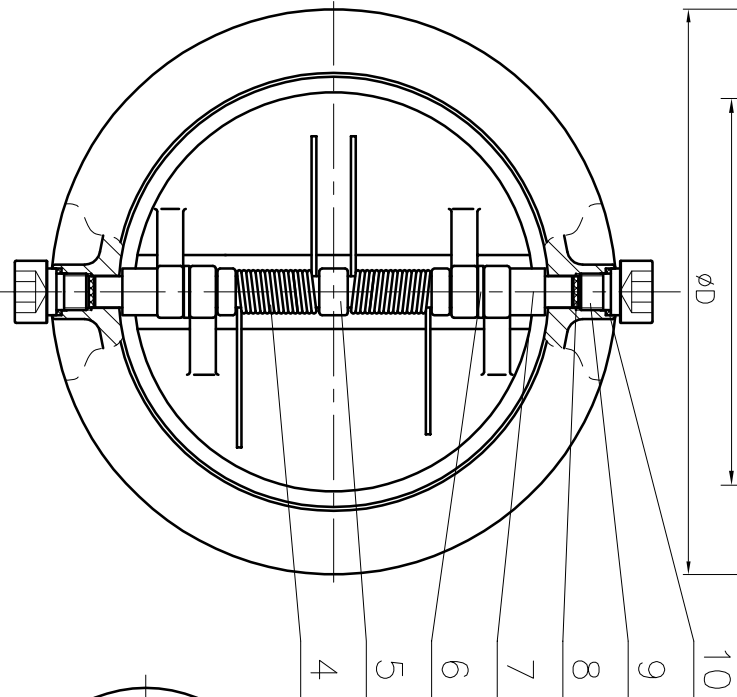
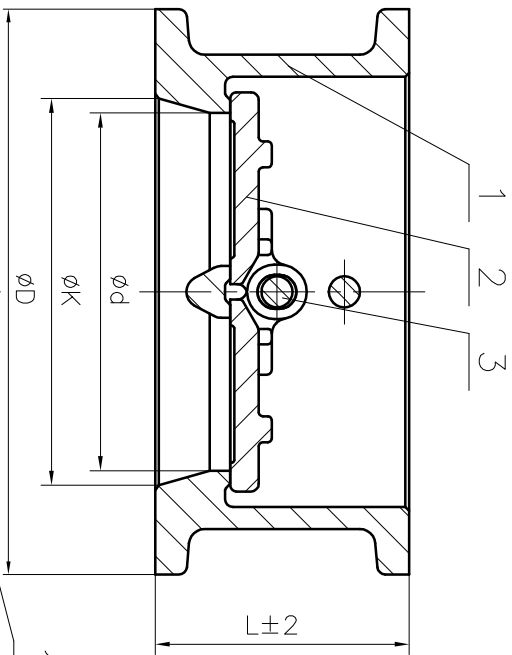


051/M9M9LAC



Nominal pressure			150LB		
Test pressure	Shell test	3.0	Test medium	Water	Test temperature
	Seal test	2.2		Air	Normal temperature
Gas seal test	0.6				
Applicable medium			Water, Oil, Gas		
Applicable temperature			-20~302°F		

NPS	L	d	K	D	Weight (lb)
2"	2.362	1.772	1.969	3.976	-
2 1/2"	2.638	2.205	2.559	4.764	-
3"	2.874	2.756	3.150	5.197	-
4"	2.874	3.465	3.937	6.142	-
5"	3.386	4.370	4.921	7.559	-
6"	3.858	5.236	5.906	8.583	-
8"	5.000	7.126	7.874	10.709	-
10"	5.748	9.213	9.843	12.992	-
12"	7.126	10.630	11.811	14.764	-

10	PIN	2	SS316
9	DISC	2	A351 CF8M
8	BODY	1	A351 CF8M
7	NUT	1	A194 8
6	EYE-BOLT	1	A193 B8
5	PACKING	4	PTFE
4	GASKET	2	SS316
3	SPRING	1	SS316
2	WASHER	2	SS316
1	HEXAGON SOCKET BLOT	3	A193 B8
NO.	DESCRIPTION	Q'TY	MATERIAL

MARK	BEFORE MODIFIED	AFTER MODIFIED	DATE	ANIX [®]	ANIX VALVE USA
DRAW.		APP.			
CHK.		DATE			
				SCALE	Wafer Double Disc Swing Check Valve, 150lb
					CV76W6W/150

- NOTE:
1. Design and Manufacture for valve according to ANSI B16.34-2009.
 2. Face-to-face dimensions for valve according to ASME B16.10-2009.
 3. End flange dimensions for valve according to ASME B16.5-2009.
 4. Inspection and Test for valve according to API 598-2009.