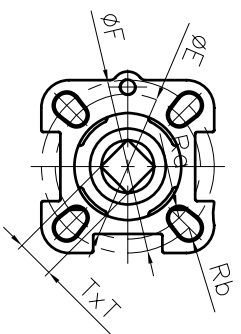
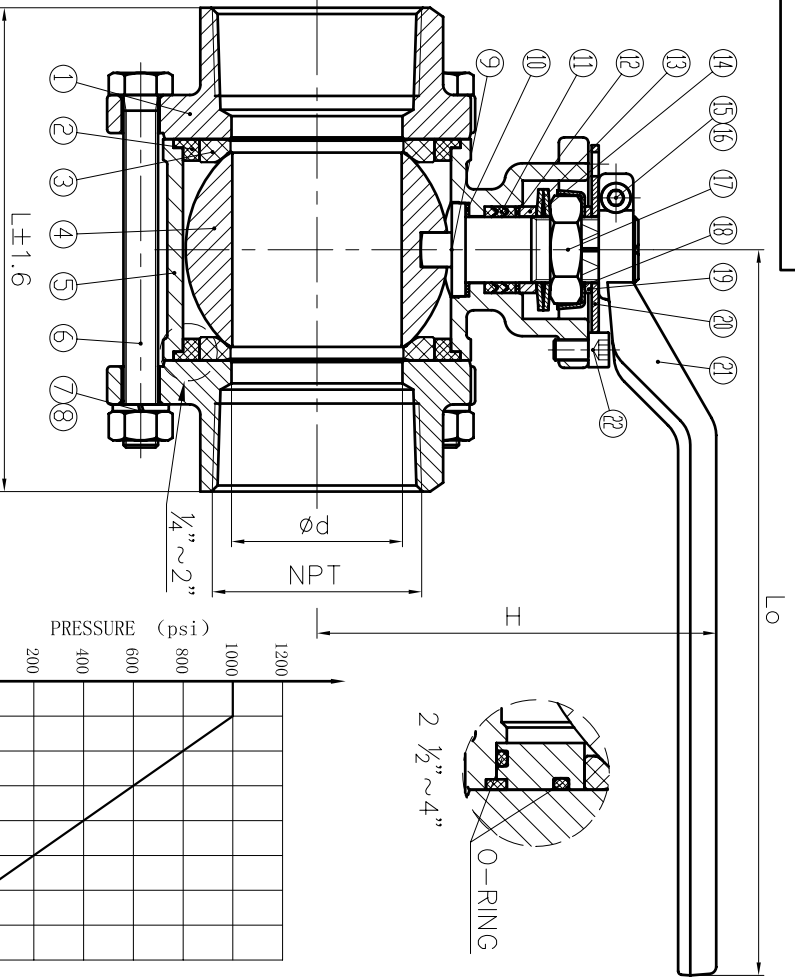


0001 /N9FC1HAB



Nominal pressure	1000PSI	
	Shell test 10.4	Test medium
Test pressure	Seal test 7.6 Mpa	Water temperature
Gas seal test	0.6	Air
Applicable medium	Water, Oil, Gas	
Applicable temperature	-20~302°F	

22	HEX SOCKET BOLT	1	A193 B8
21	HANDLE	1	STAINLESS STEEL
20	LOCATOR	1	304
19	WASHER	1	304
18	STOPPER	1	304
17	NUT	1	A194 8
16	HEX SOCKET BOLT	1	A193 B8
15	NUT	1	A194 8
14	BUTTERFLY SPRING	1	304
13	GLAND	1	304
12	GRAPHITE PACKING	1	GRAPHITE
11	PACKING	1	PTFE
10	STEM WASHER	1	PTFE
9	STEM	1	A276 316
8	NUT	-	A194 8
7	SPRING WASHER	-	304
6	HEXAGON HEAD BOLT	-	A193 B8
5	BODY	1	A351 CF8M
4	BALL	1	SS316
3	SEAT	2	PTFE
2	GASKET	2	PTFE
1	BONNET	2	A351 CF8M
NO.	DESCRIPTION	QTY	MATERIAL

NPS	L	d	NPT	Lo	H	E	F	a	b	T x T	Weight (lb)
1/2"	2.953	0.591	1/2"	5.118	2.638	1.417	1.654	0.118	0.118	0.354x0.354	1.477
3/4"	3.150	0.768	3/4"	5.118	2.972	1.417	1.654	0.118	0.118	0.354x0.354	1.477
1"	3.543	0.984	1"	5.906	3.504	1.654	1.969	0.118	0.138	0.433x0.433	2.072
1 1/4"	4.331	1.260	1 1/4"	5.906	3.70	1.654	1.969	0.118	0.138	0.433x0.433	3.307
1 1/2"	4.724	1.496	1 1/2"	8.268	4.350	1.969	2.756	0.138	0.177	0.551x0.551	4.497
2"	5.512	1.929	2"	8.268	4.587	1.969	2.756	0.138	0.177	0.551x0.551	6.790
2 1/2"	6.299	2.520	2 1/2"	8.268	5.197	1.969	2.756	0.138	0.177	0.551x0.551	-
3"	7.087	3.031	3"	10.630	6.142	2.756	4.016	0.177	0.217	0.669x0.669	-
4"	8.465	3.898	4"	12.598	6.772	2.756	4.016	0.177	0.217	0.669x0.669	-

- NOTE:
1. Design and Manufacture for valve according to ASME B16.34.
  2. Inspection and Test for valve according to API 598.
  3. The connection of screwed for valve according to ANSI B1.20.1.

MARK	BEFORE MODIFIED	AFTER MODIFIED	DATE
DRW.	APP.		
CHK.	DATE		

<b>ANIX</b> ®		SCALE
ANIX VALVE CO., LTD		3PC Ball Valve 1000PSI, NPT High Mounting Pad
BVH13F6N/1000		